

A POWERFUL ARCHITECTURAL STATEMENT

In 2001, the design of the Musée des Confluences was entrusted to Coop Himmelb(l)au, an Austrian firm with a worldwide reputation for its buildings based on the architecture of deconstruction. The symbolic setting at the confluence of the Saône and Rhône rivers within the Lyon agglomeration, characterised by its scientific, economic and industrial past, called for a strong architectural statement. Hence Coop Himmelb(l)au's idea of responding to the cultural project of the museum by combining two architectural units, the Crystal and the Cloud, symbols respectively of the known the familiar environment of today and the unknown the sometimes unfounded fears of tomorrow.

THE BASE, THE CRYSTAL AND THE CLOUD

The building rests on a Base which houses the production workshops, the auditoriums and the group visit reception area.

The Crystal marks the north entrance to the museum, on the city side. It is designed to be an urban forum: under its forty metres of glazing is an area for meeting and exchange. Its design is intentionally simple, a call to the city, placing it squarely in the twenty-first century.

A complete contrast by its shape and the diversity of its materials, the Cloud rests on three piers and fourteen monumental columns. It is clad in a stainless steel skin which captures the multiple echoes of sky and city, and of water and greenery. It houses all the exhibitions.

By its form, the Musée des Confluences suggests the infinite diversity of knowledge and the multiple uses of a mixed area dedicated to receiving visitors of all kinds.

DÉPARTEMENT DU RHÔNE
29-31 cours de la Liberté
69 003 LYON - France
33(0)8000 869 869

MUSÉE DES CONFLUENCES
www.museedesconfluences.fr
museedesconfluences@rhone.fr

ADMINISTRATION
10 rue Boileau
69 006 LYON - France
Information : 33(0)4 72 69 05 00

STRATEGY AND COMMUNICATION
communication.museedesconfluences@rhone.fr

INFORMATION ABOUT THE CONSTRUCTION SITE
86 quai Perrache
69 002 LYON - France
Information : 33(0)4 78 37 30 00
Open Tuesday to Saturday from 1 p.m. to 6 p.m.
and on Sunday from 10 a.m. to noon
and 1 p.m. to 6 p.m.

RHÔNE

LE DÉPARTEMENT

Copyrights : Blaise Adillon Musée des Confluences / Département du Rhône.
Collections : Musée des Confluences / Département du Rhône - Patrick Agneau
Armin Hess - Coop Himmelb(l)au.
Scenographies : Zen+dCo, Agence Klapish Claisse, Agence Du & Ma.
GTM Batiment et Génie Civil Lyon
Graphics : ga3lle - www.ga3lle-taburiaux.com - contact@ga3lle-taburiaux.com

musée des confluences

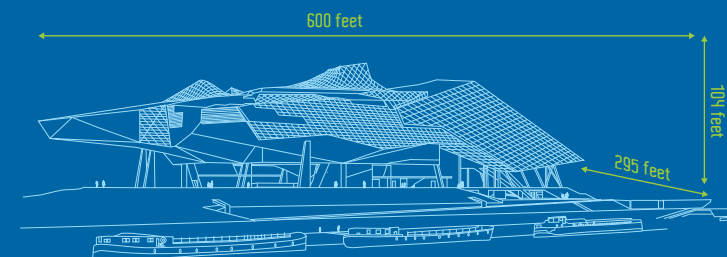
Lyon | France

2014

The Musée des Confluences is an institution of the département of the Rhône. It is a dynamic project reflecting the issues, strategies and challenges of today. It also illustrates the desire to be open to the world, the will to innovate and the duty of solidarity. This is why it will be a meeting place for all, where each individual will find, in his or her own way, learning and pleasure, knowledge and relaxation, culture and citizenship.



The Musée des Confluences, a project managed by the Département du Rhône and designed by the Austrian firm of Coop Himmelb(l)au, is located at the confluence of the rivers Rhône and Saône. The building has 236 800 square feet of floor area and is themed on crystal and cloud, on mineral and lightness.





A LOOK AT HUMAN SOCIETIES

Since the dawn of civilisation, humanity has been built on encounter, exchange and sharing. Continuing this long heritage and drawing on its rich collections, the Musée des Confluences aims to describe and provide an understanding of how human societies have evolved, dreamed and searched for answers over time and space. Thus, the earth since its origins and the history and geography of humanity will be revealed, served up for our contemplation, our emotions and our joy in attempting to understand the infinite variety of environments and civilisations.



A RICH HERITAGE

The museum's collections are the legacy of the Muséum d'Histoire Naturelle and the Musée Guimet in Lyon. They constitute a rich heritage, in terms of both volume and renown, in four domains: life sciences, earth sciences, social sciences, and science and technology. The collections are some of the richest in the areas of natural sciences and extra-European ethnology, and the creation of the Musée des Confluences has provided a venue to display them in an exceptional way. The moniker of "Musée de France" is an acknowledgement of the public's interest in this heritage.



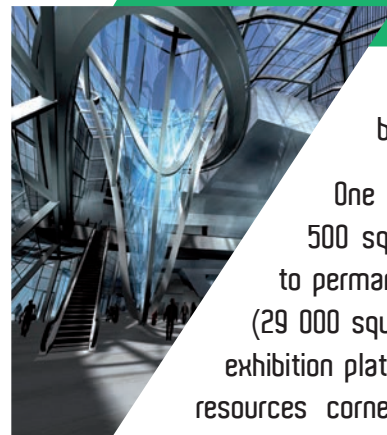
A UNIQUE CULTURAL VENUE

With its remarkable cultural installations, the museum has broken the mould.

One of the floors of the Cloud (35 500 square feet) is dedicated entirely to permanent exhibitions, while the other (29 000 square feet) offers two temporary exhibition platforms, discovery areas, a digital resources corner and the Museolab, an area dedicated to experimentation in museum technology.

The Base, which is the museum's technology area, is also a public area with two auditoriums seating 327 and 122 respectively, available for scientific and cultural programmes and private events.

The museum's services include a brasserie, a self-service restaurant, a cafeteria with terrace, a bookstore and shop and a 262 600 square feet landscaped garden open to the public.



PERMANENT EXHIBITION AREAS

Four areas display 1,600 emblematic items from the collection.

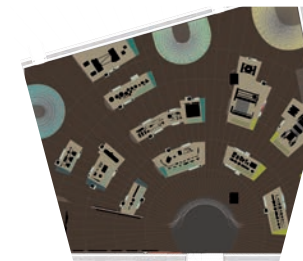
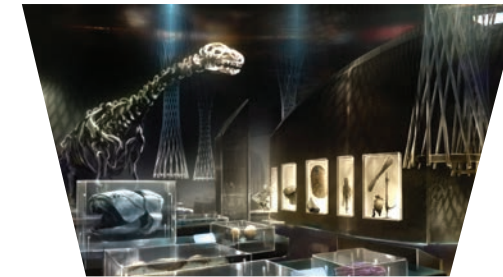
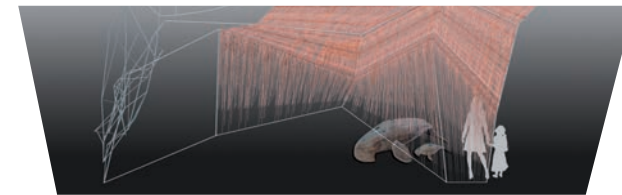
The first room considers the issue of the origins of the universe and mankind by mixing two ways and means of explaining the world: one scientific, the other symbolic.

A second room presents Homo sapiens as an animal species evolving within the complex mesh of biodiversity. The path through the room examines the existence of human beings in relation to their natural, social and personal environment.

A third space provides stories, from here and elsewhere, concerning the past and the present on three themes: organisation, exchange and innovation. With an eye to the future, it raises the issue of the individual's involvement in and commitment to building ways to live together.

Finally, the last space takes up the issue of death in different societies and of how mankind has always attempted to push back its limits.

The spaces are differentiated from each other by a highly original and powerful scenography.



TEMPORARY EXHIBITION AREAS

One of the museum's key policies is to hold temporary exhibitions, based on a thematic approach of original productions and co-productions as the way in to the exhibitions. This policy is anchored both locally, with sensitivity and openness to the cultural partners and economic players in the territory, and internationally, by the very nature of its collections and Lyon's ties with the world.

Experimentation in museum technology combined with the power of digital makes the museum a centre for research and creation, one that is resolutely contemporary and geared to the captive audience. Cultural coordination (discovery areas, tours, workshops etc.) and cultural and scientific programmes (shows, lectures, events etc.) reinforce the ties between visitors, cultural heritage and knowledge.

